



DESTINATION: SINGAPORE

A relocation guide for
foreign healthcare
professionals

This publication seeks to give you a sneak preview into the public healthcare system in Singapore and we aim to assist your relocation matters as well as to guide and acclimatise you to Singapore.

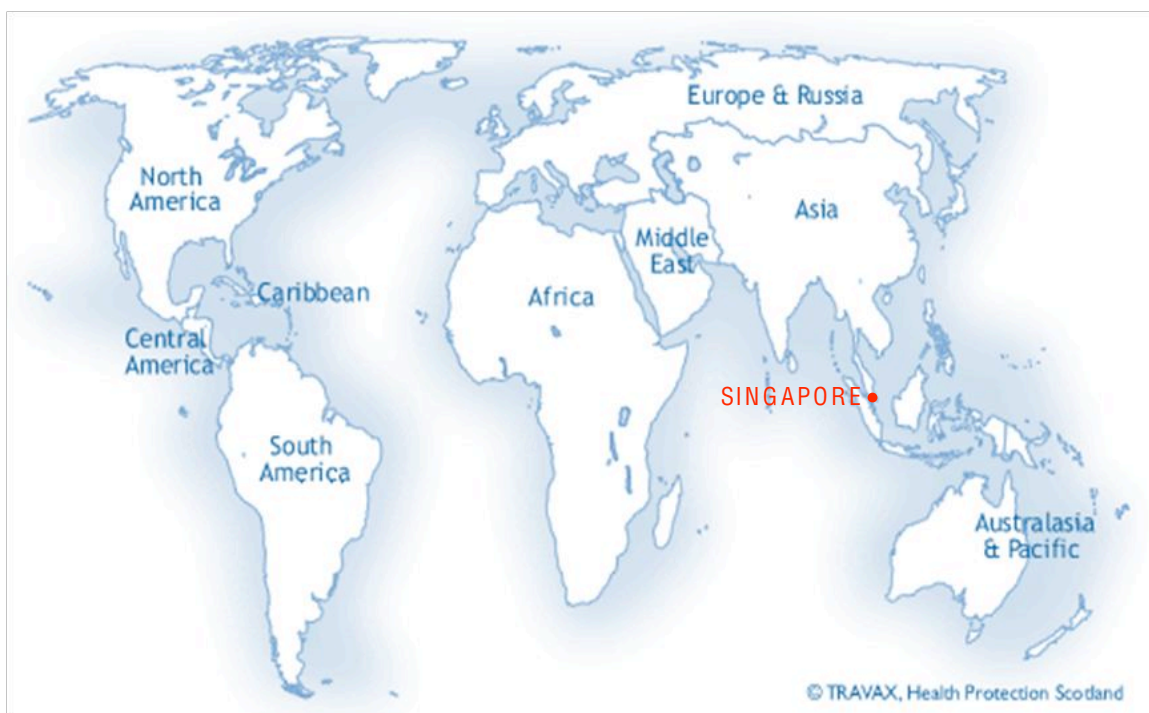
Contents

Chapter 1: Relocating to Singapore	01
Chapter 2: Living in Singapore	05
Chapter 3: Working in Singapore	09
Chapter 4: Studying in Singapore	17
Chapter 5: Banking in Singapore	27
Chapter 6: Getting Around	30
Chapter 7: Staying Connected	33

Preface

SINGAPORE – THE “DOT IS HOT”

The “Dot is Hot” aptly sums up the new and exciting developments in the public healthcare system on the tiny island of Singapore. Despite our size, a combination of excellent healthcare infrastructure, skilled healthcare professionals, adoption of latest medical technology, as well as emphasis on translational research has placed us at the forefront of medical excellence.



We are now poised to build on this achievement, and to continue to bring leading-edge medical care to both local as well as international patients. Besides committing resources to improve public healthcare infrastructure, the Singapore government will also be spending S\$1.9b over the next 5 years to expand the pool of doctors, nurses, pharmacists and allied health professionals by 40%. In a concerted effort to promote translational research, S\$1.55b will also be awarded by 2010 to support thematic flagship research programmes. All these initiatives underscore a major transformation in the healthcare delivery model in Singapore that supports our vision of becoming an international medical hub.

MOH Holdings is therefore excited to be part of the process to facilitate this transformation. We are working in collaboration with the public healthcare clusters and institutions to recruit outstanding healthcare professionals to be part of the new healthcare landscape in Singapore. We are glad that you are considering or have decided to join us in this exciting journey towards medical excellence. We have compiled this handbook with information about the public healthcare system, medical service schemes, research landscape, as well as basic information about working and living in Singapore. We hope the information will be useful, and we look forward to welcoming you to Singapore soon.

RELOCATING TO SINGAPORE

Chapter

1

Choosing the right moving company will save you on a lot of hassle. A professional moving company will be experienced and knowledgeable enough to guide you through the procedures and provide information on relocation, packing, necessary paperwork, insurance, etc. You should expect a good mover to assist you from the day you start packing, till the day you unpack in Singapore.

You should source for a reliable company with experience in overseas shipping, and preferably one that is affiliated to Singapore. Try to look for an international mover who has a good track record to give yourself peace of mind that your things are safe and in good hands. You may also want to compare a few quotes from various companies and thereafter ensure that both parties agree on the price (find out if they have other costs for insurance, custom fees, etc) to minimise on any disagreements after the move. For a list of movers that will help you with a painless transition, visit http://www.contactsingapore.sg/home/index.php/eng/moving_to_singapore/relocation.

Remember to document all your boxes and keep a record of the things inside each box so you may tally them quickly once they arrive in Singapore. Your moving company will help you with the unpacking and placing of furniture too. You may want to plan ahead of time where you want which items to be at.

Singapore prohibits the entrance of certain goods, so you may want to keep this in mind when you pack:

- Chewing gum (except dental or nicotine gum)
- Chewing tobacco and imitation tobacco products
- Cigarette lighters of pistol or revolver shape
- Controlled drugs and psychotropic substances
- Firecrackers
- Endangered species of wildlife and their by-products
- Obscene articles, publications, video tapes/discs and software
- Reproduction of copyright publications, video tapes, video compact discs, laser discs, records or cassettes
- Seditious and treasonable materials

It is an offence if you attempt to bring any of the items listed above into Singapore. For more details, please refer to this website: www.customs.gov.sg.

Relocation of pets

To import your pets (e.g. dogs, cats, ornamental birds, rabbits, guinea pigs etc), you must first obtain an import permit from the Agri-Food & Veterinary Authority of Singapore (AVA) within 30 days prior to the date of arrival. Application for the permit can be made with the online form at this website: www.ava.gov.sg. Please allow two working days to process the permit upon receipt of the duly completed application. The import permit is valid for 30 days from the date of issue and the fee is S\$50 per permit.

Dogs & Cats

Singapore is free from dog diseases, such as rabies, that can pose a threat to the local dog population and can also infect humans. To continue such safety, all dogs brought into Singapore as of 1st May 2001, must be implanted with a microchip. The microchips - about the size of a grain of rice is implanted under the skin of a dog's neck and traces where an infected animal came from so that further imports can be blocked.

In order to facilitate the processing of import permits for mixed or cross breed dogs, AVA will require the applicant to attach a colour photo of the dog showing the face and body clearly. This is to help AVA to

identify the dog breed and ensure that it is not one of the breeds which is prohibited from import. The following breeds of dogs are banned in Singapore:

- Pit Bull, including the American Pit Bull Terrier, American Staffordshire Terrier, Staffordshire Bull Terrier and the American Bull Dog;
- Neapolitan Mastiff;
- Tosa;
- Akita;
- Dogo Argentino;
- Fila Brasileiro; and
- All crosses of these breeds

All dogs and cats imported from any country other than Australia, New Zealand, United Kingdom and Ireland must be quarantined for at least 30 days at the Sembawang Animal Quarantine Station (SAQS), where the pets will be vaccinated against rabies. For details of veterinary conditions for imports, please refer to AVA's website. SAQS is very heavily booked, so you should apply for a quarantine space as early as two months in advance. Pets put on the waiting list will be notified of a successful application one month prior the indicated date of arrival. All charges are to be borne by the owner and it includes accommodation, transport to SAQS, veterinary examination and rabies vaccination.

The quarantine charges for 30 days at SAQS:	
Standard kennel/cattery	S\$ 643.00 per pet
Air-con kennel/cattery	S\$ 926.50 per pet

You may fly your pets as excess baggage or as cargo. For excess baggage pet shipment, owners must travel on the same flight, subject to the carrier's acceptance. For Manifest Cargo, the pet travelling will be checked in as manifest cargo by the carrier. This is normally arranged by a pet handling agent, who will book the shipment with the relevant carriers.

For more information on the relocation of pets to Singapore, please refer to this website:
<http://www.expatsingapore.com>

Other Animals

If you are importing bird(s) into Singapore, please check AVA website for the list of Highly Pathogenic Avian Influenza (HPAI) affected countries. The import of birds from these countries is currently suspended.

Import of the following does not require any AVA import permit:

- Ornamental fish if the amount of import falls under the personal allowance. For more information, please refer to <http://www.ava.gov.sg/InformationForTravellers/>.
- Terrapin / red-ear slider. However, a Letter of Authorisation must be obtained prior to import.

The import of insects as pets into Singapore is not allowed.

For the import of other types of personal pets – rabbits, hamsters, chinchillas, gerbils, guinea pigs, and red-ear sliders, please visit <http://www.ava.gov.sg/>

Pet Handling Agent

Should you prefer to engage a one-stop service to handle all the necessary documentation and matters pertaining to the import and clearance of your pet(s), you may refer to the Pets Directory on this website: <http://www.i-pets.sg/index.php> or <http://www.petschannel.com/shoppeplace/?cc=6>

Within Singapore

If you are staying in a public Housing Development Board (HDB) flat, please note that only one dog is allowed, and not more than three dogs are allowed in non-HDB premises (including private housing). No cats are allowed in a HDB dwelling unit.

If you need someone to walk or play with your pet while you are at work or away on a conference, there is an option of using a dog walking service. A sample of charges is as follows:

Activity	Cost (S\$)
Dog park outings (park/beach) – 45 minutes	\$40 for the first dog, \$10 for each additional dog
Beach walk & swim (including shower and towel dry) – 45 minutes	\$70 for the first dog, \$10 for each additional dog
45-minute walk around the neighbourhood	\$20 for the first dog, \$5 for each additional dog
Dog sitting - 2 visits a day (inclusive of play time, feeding the dog, clearing of pet's soil and watering of plants)	\$55 for the first dog, \$5 for each additional dog

Source: <http://www.wholetthedogsout.com.sg/services/services.htm>

LIVING IN SINGAPORE

Chapter

2

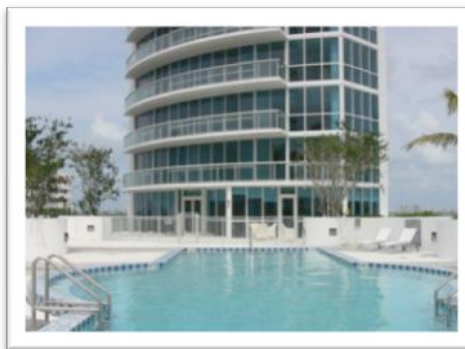
Through visionary and practical planning, Singapore has developed into a city state that offers accessible, affordable, and high quality accommodation for both locals as well as expatriates. You will find an array of housing options that will meet the needs of your family, children and pets, and also allow for integration with the society of Singapore. In fact, a Mercer Human Resource Consulting survey placed us as Asia's Number 1 place to live, work and play³.

Types of Accommodation



HDB Flats

Many expatriates feel that this is one of the best ways to experience Singapore – by living among Singaporeans. There are 22 HDB New Towns in Singapore, which provides affordable flats for more than 80% of the country's population. Each town is designed to be a self-sufficient community with its own schools, bus interchange, MRT stations, places of worship, stadium, swimming pools, shopping centres, cinemas, and hospitals.



Executive Condominiums

Executive Condominiums (ECs) were introduced to cater to the more affluent, especially young professionals who can afford more than an HDB flat, but find private property out of their reach. ECs are comparable in design and facilities to private condominiums as they are developed and sold by private developers.



Condominiums / Apartments

This is, perhaps, the most common choice among expatriates due to their choice location and amenities. There is no restriction on foreign ownership of private apartments and condominiums. Selling prices can range from over S\$400 per square foot (psf) in the suburbs to over S\$2,000 psf in the prime Orchard Road area.

³ Mercer Human Resource Consulting, 2005 - 2006



Private Landed Property (e.g. Bungalows, Semi-Detached and Terrace Housing)

This is a less common choice among foreigners due to rules governing such properties in land-scarce Singapore. Foreigners are generally not allowed to buy landed properties in Singapore. Permanent Residents must first seek state approval before they are allowed to buy bungalows, semi-detached and terrace houses. But some exceptions have been made, as in the case of the sale of sea-front bungalows at Sentosa Cove on the resort island of Sentosa.



Cluster Houses/ Town Houses

Cluster houses are a group of terrace houses, semi-detached houses or bungalows that share an array of common facilities. The most common facilities cluster houses enjoy are a communal pool, gym and playground.

To Purchase or Rent

While prices and rentals rates for public as well as private properties have increased significantly in 2007, there are signs that the market has moderated in 2008. In making the decision to purchase or rent, it is important to consider the financial implications as well as the duration which you expect to be staying in Singapore. You may also choose to rent a place upon arrival in Singapore, and then decide if there is a need to eventually to buy your own property.

The price range and rental rates of properties will depend on the size, tenure and location of the property. For a more updated list and price of property, you may like to visit the websites of local realty companies, or contact a property agent with a Certificate in Common Examination for House Agents (CEHA) and a Membership of Singapore Association of Estate Agents (SAEA). A list of the accredited property agencies can be obtained at this website: <http://www.saea.org.sg/>. There are also many online guides and print resources providing information on purchase or rental of properties in Singapore:

- <http://condo.singaporeexpats.com/>
- <http://www.entersingapore.info/find-a-home/index/php>

Purchase

Singapore has one of the most liberal markets for non-landed private residential properties – apartments or condominium units. As a foreigner, you can buy a non-landed property in Singapore freely. They typically come with three types of land tenure – freehold, 999-year leasehold (which is as good as freehold land as you can own it for nearly 1,000 years!) or 99-year leasehold.

There is, however, limited sale of private landed properties offered to foreigners. Foreign persons (including natural persons, foreign companies and societies) are restricted from purchasing:

- Vacant land
- Landed residential property, such as bungalows, terrace houses, semi-detached houses
- Residential property in a building of less than 6 levels
- A HDB Shophouse
- A HDB flat purchased directly from HDB
- A resale HDB flat where HDB has consented to the sale
- Executive Condominium bought under the Executive Condominium Housing Scheme Act, 1996

Rental

Rental rates are subject to location and type of housing within Singapore. Rental rates can range from around S\$4,000 to as high as S\$12,000 a month or more, for private apartments of 900 square feet to 2,400 square feet in size respectively. Here are some information on the various types:

- Private apartments/ condominiums rental rates will be dependent on the facilities, its size, and condition, and location.
- Public (HDB) flats located all over Singapore will be an affordable option that usually comes with basic amenities like food centres, supermarkets, convenient transportation services and more.

While foreigners are not allowed to purchase public flats, you may rent them, subject to certain conditions. Please see HDB's conditions and list of median rentals of flats from their website: www.hdb.gov.sg.

Generally, tenants of qualified HDB flats must fall into the following categories:

- Singapore Citizens;
- Singapore Permanent Residents; or
- Non-Citizens legally residing in Singapore (holders of Employment Passes, Work Permits, Student Passes or Long-Term Social Visit Passes)

WORKING IN SINGAPORE

Chapter
3

According to the IMD World Competitiveness Yearbook 2006, Singapore ranks fourth for having least restrictive immigration laws for employing foreign labour. As long as you possess the skills, experience and qualifications, and are interested in being part of the exciting developments in Singapore's healthcare system, there will be a work pass that is suitable for your needs.

To facilitate your search for a job, you may apply for an Employment Pass Eligibility Certificate (EPEC) that will allow you to stay in Singapore for up to 1 year, as long as you have graduated from a university recognized by the Ministry of Manpower (MOM)⁴. The list of universities recognized by MOM for the EPEC can be found on their website at:

http://www.mom.gov.sg/publish/momportal/en/communities/work_pass/other_passes/Employment_Pass_Eligibility_Certificate/Selected_Institutions_List.html. The EPEC application which is to be submitted online typically takes 7 working days for it to be processed.

If you have already secured a job offer before entering Singapore, then you will be required to apply for a work pass, which is administered by the Ministry of Manpower (MOM). There are different types of work passes, each designed for applicants with different qualifications and experiences.

Types of Work Pass	Appropriate for
Employment Pass (EP) P & Q Pass	<p>Foreign professionals, managers, executives and specialists. Applicants will be assessed based on your salary, qualifications, work experience and nature of job, and other factors.</p> <p>There are three categories of Employment Pass: P1, P2 and Q Pass:</p> <ul style="list-style-type: none"> • P1 Pass - For applicants earning a fixed monthly salary of more than \$7,000. • P2 Pass - For applicants earning a fixed monthly salary of more than \$3,500 and up to \$7,000 and he/she possesses recognised qualifications. • Q Pass - For applicants earning a fixed monthly salary of more than \$2,500 and he/she possesses recognised qualifications.
S Pass	<p>Middle-level skilled applicants. S Pass applicants are assessed using a points system that takes into consideration your salary, qualifications, skills, work experience, and job type.</p> <p>S Pass applicants must be minimally paid a fixed monthly salary of \$1,800.</p>

Employment Pass (EP)

To check your eligibility for an Employment Pass (EP), you may wish to take the online Employment Assessment Self-Test that can be found on this website: <http://sat.mom.gov.sg/>. Generally, EPEC holders are likely to qualify for an EP upon securing employment here. EP holders will qualify for dependant privileges.

Your employers will be responsible for applying for your EP online. Online EP application would typically

⁴ Please note that possession of a degree from a university on the list or skilled migrant visa does not automatically guarantee the application to be successful as there are others factors that are taken into consideration for granting an EPEC.

take 2 weeks to process while the outcome for manual application would be known in 3 weeks. You will be required to present additional documents and information on request by the employers or MOM.

S Pass

The S Pass is for middle level skilled manpower e.g. technicians, and is assessed using a points system that takes into consideration your salary, qualifications, skills, work experience and job type. S Pass applicants must be minimally paid a fixed monthly salary of \$1,800. S Pass holders who are paid a fixed monthly salary of more than \$2,500 would qualify for dependant privileges.

Training Employment Pass

If you are here on a practical training programme for a professional, managerial, executive or specialist job, then you may apply for a Training Employment Pass. An undergraduate on a training attachment in Singapore that forms part of the his degree programme or company employee from their foreign office/ subsidiary coming to Singapore for professional/executive training can also apply for a Training Employment Pass. In addition, the trainee has to earn a monthly salary of at least \$2,500 and holds an acceptable tertiary or professional qualification.

It is crucial to the application that it is sponsored by a well-established Singapore company and must include a detailed training programme stating the objective, type, location and duration of training for the period applied.

Passes for Family Members or Dependents

Employment Pass holders can apply for the Dependant's Pass and/or Long-Term Social Visit Pass for their family members.

Dependant Privileges & Letter of Consent (LOC)

Dependants refer to the spouse, unmarried or legally adopted children under 21 years of age. EP holder and S Pass holders who earn a fixed monthly salary of more than \$2,500 are eligible to apply for dependant privileges.

Dependants of EP holders may take up employment provided they obtain a LOC from MOM. However, dependants of S Pass holders cannot apply for a LOC but may apply for a P/Q/S/R work pass, which will be assessed on their own merits.

Long Term Social Visit Pass (LTSVP)

The LTSVP is for parents, parents-in-law, step children, common law spouse, handicapped children and/or unmarried daughter above 21 years of age, of P1 and P2 Pass holders. These LTSVP holders may take up employment by applying for a P/Q/S/R work pass, which will be assessed on their own merits.

Work Holiday Pass

The Work Holiday Pass which is valid for 6 months, is opened to application by undergraduates and graduates (between 17 – 30 years old) from universities and equivalent institutions in Australia, France, Germany, Hong Kong, Japan, New Zealand, the United Kingdom and the United States. Students who have gained admission to the university but have not commenced their studies may also apply.

Central Provident Fund

All Singaporeans and Permanent Residents aged 21 and above are required to contribute to their Central Provident Fund (CPF) account. This is a comprehensive social security savings scheme where both employers and employees (known as CPF members) have to make monthly contributions from their salary into three accounts: Ordinary, Special, and Medisave.

The CPF savings will earn a minimum risk-free interest of 2.5% guaranteed by the Government. In 2008 and 2009, Special, Medisave and Retirement Account savings will earn a guaranteed minimum 4% interest. In addition, the first \$60,000 in the combined CPF balances, with up to \$20,000 from the Ordinary Account, will earn an extra 1% interest.

Members may draw on their CPF accounts for their financial needs in retirement, healthcare, home ownership, family protection and asset enhancement.

Property

The CPF Ordinary Account savings can be used to buy a Housing Development Board (HDB) flat or a private property under the CPF housing schemes. The CPF savings can be used for full or partial payment of the property, to service the monthly housing payments and to settle the legal cost, stamp duty and other related-cost incurred in connection with the purchase of the property.

Insurance and Investment

CPF members may use the ordinary account to pay for MediShield, which is a low-cost medical insurance giving a member and his family financial protection against the expenses of medical treatment in the event of prolonged or serious illnesses. CPF can also be used to purchase more comprehensive policies and riders to complement the basic MediShield, as well as Members can also purchase ElderShield which is an affordable severe disability insurance scheme which provides basic financial protection to those who need long term care.

The CPF ordinary account can also be used to pay for single premium or recurring single premium insurance policies, Dependents' Protection Scheme (DPS), and/or Home Protection Scheme (HPS).

To enhance retirement savings, a member can also invest his Ordinary and Special Accounts savings in approved investments under the CPF Investment Schemes.

Education

The Education Scheme helps CPF members pay for your children's or your own full-time local tertiary education at approved institutions.

For more details of how the CPF can be used, please visit this website:
<http://mycpf.cpf.gov.sg/Members/Gen-Info/Sch-Svc/S-and-S.htm>

Withdrawal of CPF Savings

CPF members can withdraw their savings at age 55, after a Minimum Sum in their Retirement Account is set aside. Members can also withdraw their CPF savings if they are permanently incapacitated or will leave Singapore and West Malaysia permanently. If members do return to Singapore, they must reimburse the CPF Board for the amount they had withdrawn with interest.

When a CPF member reaches 55 years old, he will need to set aside a Minimum Sum, using his savings in the Ordinary and Special Accounts, in the Retirement Account. After setting aside this Minimum Sum, the rest of the savings in the Ordinary and Special Accounts can be withdrawn in one lump sum.

The Minimum Sum monthly payout to a member begins when he reaches 65 years old. If a member has kept his Minimum Sum with a participating bank, he will receive a monthly income from the bank until the Minimum Sum is exhausted. On the other hand, if a member has bought a life annuity, he will get a monthly income for life from his insurance company.

Besides the Minimum Sum formed by the Special and Ordinary Account, a member can withdraw his saving from the Medisave Account at the age of 55 after setting aside a Medisave Minimum Sum of \$28,500 to cater to healthcare expenses that can be drawn from the account during his retirement years. This Medisave Minimum Sum is reviewed annually and is adjusted every July of the year.

Taxation System

Under our taxation system, non-Singapore Citizens or non-Permanent Residents, are liable to tax in Singapore on all income accrued in, or derived from Singapore. The extent of your tax liability will depend on your tax residency status. The Year of Assessment (YA), and corresponding tax calculations, is based on a calendar year, starting midnight on 1 January and ending midnight on 31 December.

If you stay or work in Singapore for at least 183 days in a calendar year, you will be regarded as a tax resident. The number of days in Singapore includes weekends and public holidays.

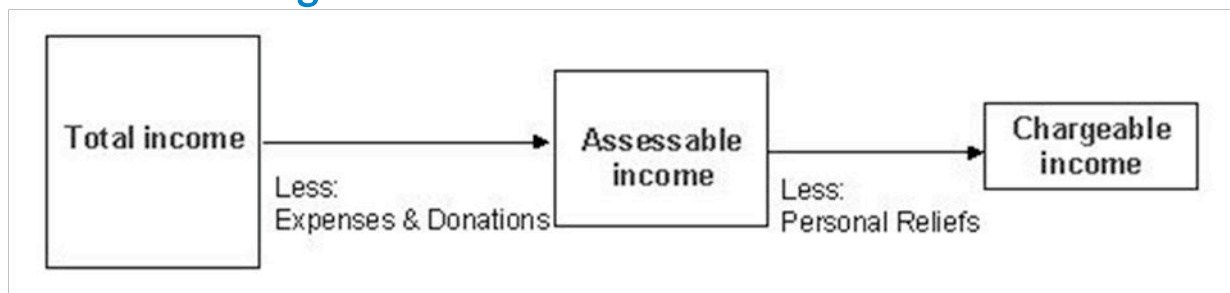
As a resident:

- You will be taxed on all income earned in Singapore and any overseas income that was brought into Singapore prior to 1 Jan 2004.
- Your income, after deduction of tax reliefs, will be taxed at progressive resident rates.
- Your foreign-sourced income (with the exception of those received through partnerships in Singapore) brought into Singapore on or after 1 Jan 2004 is tax exempt.

Resident tax rate is as shown below:

Chargeable Income	Rate (%)	Gross Tax Payable (\$)
First \$20,000	0	0
Next \$10,000	3.50	350
First \$30,000	-	350
Next \$10,000	5.50	550
First \$40,000	-	900
Next \$40,000	8.50	3,400
First \$80,000	-	4,300
Next \$80,000	14	11,200
First \$160,000	-	15,500
Next \$160,000	17	27,200
First \$320,000	-	42,700
Next \$320,000	20	

Calculation of Chargeable Income



For example:

If your chargeable income for YA 2007 is \$36,000 (i.e. you earned \$36,000 in year 2006), your tax payable would be calculated as below:

First \$30,000	\$350
Next \$6,000 at 5.5%	\$330
Total tax payable	\$680

To estimate your tax payable, you may wish to use the tax calculator on this website (http://www.iras.gov.sg/irasHome/uploadedFiles/Quick_Links/e-Tax_Guides/Individuals_and_employees/How-to-calculate-your-tax.xls).

Period of Assessment

If you are here for at least 183 days straddling 2 years, you will be regarded as a tax resident for two years if you stay or work in Singapore for a continuous period of at least 183 days. This concession applies to foreign employees (excludes directors of a company and public entertainers) who have entered Singapore from 1 Jan 2007 and are unable to qualify as tax residents under our tax residency rules, due to the start date of their employment.

For example:

You have stayed or worked in Singapore from 3 Nov 2007 to 7 May 2008. You will be taxed as a resident for Years of Assessment 2008 and 2009.

Year of Assessment	Period of stay (inclusive of work) in Singapore	Resident Status
2008	3 Nov 2007 to 31 Dec 2007 (59 days)	Resident
2009	1 Jan 2008 to 7 May 2008 (128 days)	Resident
	Total (187 days)	

If you stay or work in Singapore continuously for three consecutive years, you will be regarded as a tax resident for all the three years even though the number of days you are in Singapore is less than 183 days in the first and third year.

For example:

You have stayed or worked in Singapore from 3 Nov 2007 to 7 May 2009. You will be taxed as a resident for Years of Assessment 2008 to 2010.

Year of Assessment	Period of stay (inclusive of work) in Singapore	Resident Status
2008	3 Nov 2007 to 31 Dec 2007 (59 days)	Resident
2009	1 Jan 2008 to 31 Dec 2008 (366 days)	Resident
2010	1 Jan 2009 to 7 May 2009 (127 days)	Resident

Tax Implications at a Glance

If your period of stay (including work) in Singapore	Resident status	Tax implications
Is at least 183 days in a year	Resident for that year	All your income will be taxed at progressive resident rates. You may claim tax reliefs.
Is at least 183 days for a continuous period over two years	Resident for both years	
Covers three consecutive years	Resident for all three years	

For non-resident individuals, the employment income is taxed at 15% or resident rate (<http://www.iras.gov.sg/irasHome/page.aspx?id=1190>), whichever gives rise to higher tax.

Taxation on Relocation Allowance and Reimbursement

Generally, the full amount of cash allowances given to cover relocation expenses is taxed as employment income. However, there are provisions for certain claims for relocation expenses to be deductible against this allowance. As long as you do not derive personal benefit from the relocation reimbursement and that the reimbursement is compensatory in nature and for the benefit of the employer, it can be deductible against the allowance provided. The excess of the relocation allowance from the relocation expenses is taxable. However, if the relocation expenses claimed exceed the allowance given, the excess will be disregarded and cannot be used to offset against other income.

Examples of allowable deductibles may include:

- Cost of airfare to bring you, your family members and pets to the country
- Freight / storage charges to move personal effects
- Cost of temporary accommodation (i.e. hotel or serviced apartment)
- Settling-in expenses (e.g. first purchase of beddings, kitchen appliances, subscription to broadband Internet access and enrolment for immersion programmes for expatriates)

However, reimbursements of personal expenses that are granted in respect of employment and confer a benefit on you are non-deductible against the relocation allowance, and is hence taxable. These include:

- Personal expenses such as payment for meals, laundry and transport
- Recurrent expenses after the initial settling-in period (e.g. ongoing storage costs incurred for storing your personal effects during the period of employment in Singapore)
- Reimbursement of loss incurred on disposal of personal assets resulting from relocation

Avoidance of Double Taxation

Singapore has signed Avoidance of Double Taxation Agreements (DTAs) with a number of countries to relieve double taxation of income that is earned in one country by a resident of the other country. The DTA makes clear the taxing rights between Singapore and her treaty partner on the different types of income arising from cross-border economic activities between the two countries.

The DTA also provides for reduction or exemption of tax on certain types of income.

Comprehensive DTAs

These DTAs generally cover all types of income. At present, Singapore has Comprehensive DTAs with the following countries:

Australia	Austria	Bahrain	Bangladesh	Belgium	Brunei
Bulgaria	Canada	China	Cyprus	Czech Republic	Denmark
Egypt	Estonia	Fiji	Finland	France	Germany
Hungary	India	Indonesia	Israel	Italy	Japan
Kazakhstan	South Korea	Kuwait	Latvia	Lithuania	Luxembourg
Malaysia	Mauritius	Mexico	Mongolia	Myanmar	Netherlands
New Zealand	Norway	Oman	Pakistan	Papua New Guinea	Philippines
Poland	Portugal	Qatar	Romania	Slovak Republic	South Africa
Sri Lanka	Sweden	Switzerland	Taiwan	Thailand	Turkey
United Arab Emirates	United Kingdom	Vietnam			

Limited Treaties

These agreements cover only income from shipping and/or air airport. The countries which Singapore has limited treaties with are:

Bahrain	Chile	Hong Kong	Oman	Saudi Arabia	United Arab Emirates	United States of America
---------	-------	-----------	------	--------------	----------------------	--------------------------

STUDYING IN SINGAPORE

Chapter

4

Singapore is widely recognised for our broadbased education system that not only encourages character building and skills development, but also ensure academic excellence. Our public schools have a distinctive record of high standards in teaching and learning, illustrated by international comparative studies such as the Third International Mathematics and Science Study (TIMSS) that showed the majority of students from Singapore schools outperforming the international average in Mathematics and Science.

Our students have also excelled in competitions such as world debating championships (English) and International Olympiads (Mathematics, Physics, Chemistry and Biology), ousting counterparts from other countries to clinch top prizes and distinctions. Some of our achievements include:

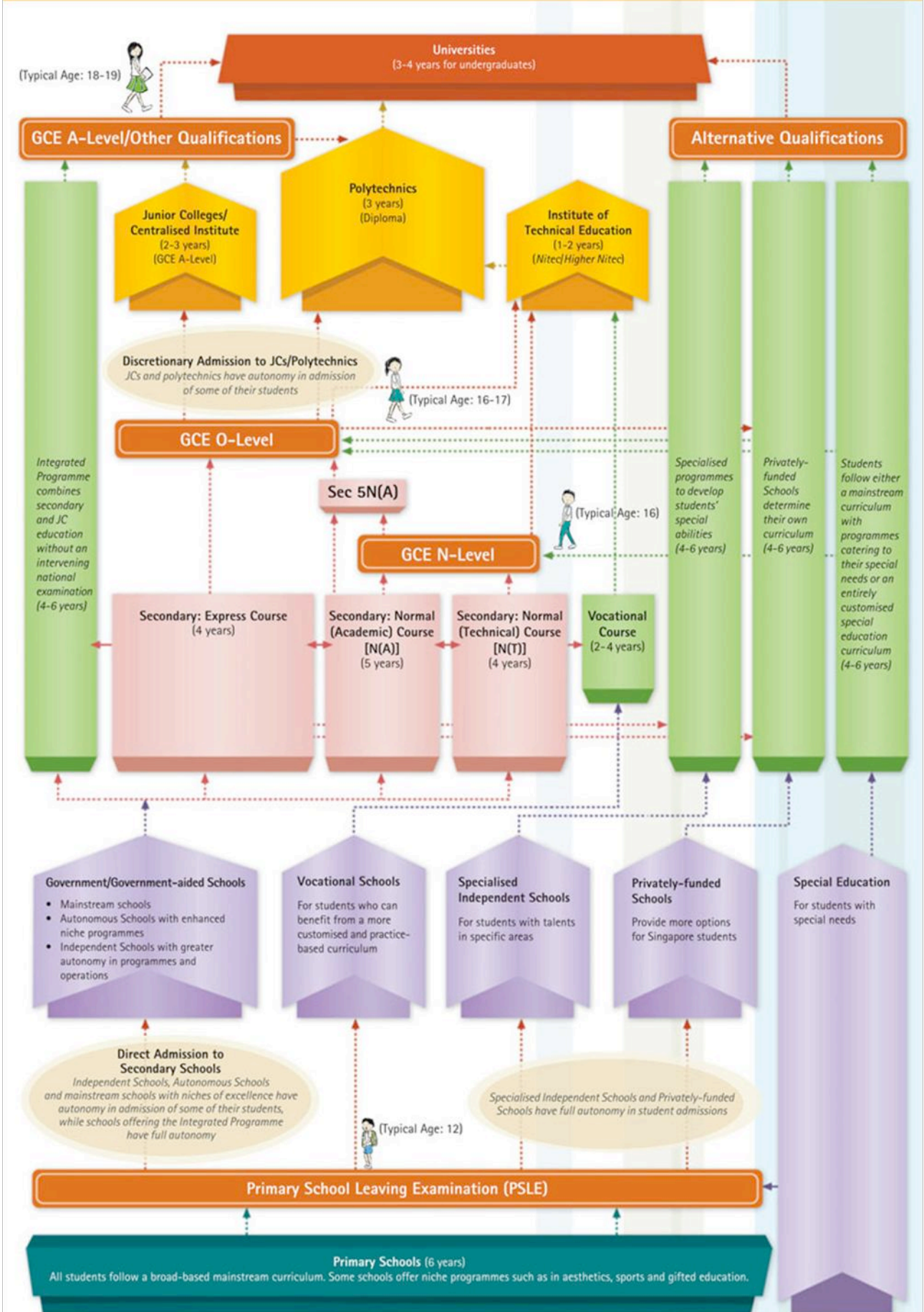
- Singapore students took first place in the 1995, 1999 and 2003 TIMSS Trends in International Mathematics and Science Study.

International educational scores (2003)					
<i>(13-year-old's average score, TIMSS Third International Math and Science Study, 2003)</i>					
Countries: (sample)	Global rank	Maths		Science	
		Score	Rank	Score	Rank
Singapore	1	605	1	578	1
Taiwan	2	585	4	571	2
South Korea	3	589	2	558	3
Hong Kong	4	586	3	556	4
Japan	5	570	5	552	5
Netherlands	7	536	7	536	9
England	10	498	18	544	7
United States	12	504	15	527	11
Malaysia	18	508	10	510	21
Italy	23	484	22	491	22

Sources: TIMSS Math 2003 and TIMSS Science 2003

- National University of Singapore (NUS) was ranked as one of the World's Top 20 universities by the QS World University Rankings, an accolade awarded to only three Asian universities. It was also ranked 19th in Times of London survey of the 200 best universities in the world for 2006. NUS also appeared in the top league of Technology and Biomedicine universities, placed 8th & 9th in faculty ranking survey respectively, ahead of many renowned universities.
- Nanyang Technological University (NTU) MBA students have also been rated as among 'the best in the world' in a 2007 study by the Economist Intelligence Unit, a member of the Economist Group rankings. NTU was amongst the world's top 100 MBA schools.
- In Asiaweek's Asia's Best Universities 2000 rankings, NUS came in 5th, out of 77 universities, in the overall ranking of multi-disciplinary schools in Asia. NTU was placed 9th, out of 39 universities, in the overall ranking for science and technology schools. And in the Asia's Best MBA Schools 2000 category, NUS Business School was one of schools identified as having the "Best Part-Time MBA" and enjoying the "Best in Reputation".

The Singapore Education Landscape



Source: www.moe.gov.sg

Local Educational System

The Singapore education system is designed to be flexible and diverse, catering to every child's abilities, interests and aptitudes so as to help each pursue their goals, stretch their faculties and expand on their strengths. The majority of students undergo the following:

- 6 years of primary school education to prepare for the national examination – Primary School Leaving Examination (PSLE)
- 4-5 years of secondary school education to prepare for the GCE 'O' Levels or 'N' Levels;
- 2-3 years of pre-university education (GCE 'A' Levels) for admission to University;
- Tertiary education for a diploma or degree

To further develop an educational system that is flexible and diverse so as to cater to every child's abilities, interests and aptitudes, and help each develop to his fullest potential, Singapore has introduced several options to provide students with greater choice and ownership in their learning - Autonomous Schools, Independent Schools, Specialised Independent Schools, Integrated Programme Schools and privately-funded schools, cater to the varied talents and aptitudes of our students. Alternative curricula and qualifications (e.g. International Baccalaureate) are also offered in some schools. The approvals for establishment of these alternatives were given on the basis of the strength of the respective schools' management team, coherence of curriculum and the quality of education which they can potentially offer to students.

A typical school term for local public schools is as follows:

Semester I	
Term I	1st week of January – 1st week of March
Term II	3rd week of March – 3rd week of May
Semester II	
Term III	4th week of June – 4th week of August
Term IV	2nd week of September – 2nd week of November

School Fees

Year	Student's Nationality	Monthly School Fees Rate		
		Primary	Secondary	Junior College / Centralised Institute
2008		S\$120	S\$170	S\$280
2009	ASEAN	S\$135	S\$195	S\$330
	Non-ASEAN	S\$145	S\$210	S\$350

School fees in local schools are much lower than in private / international schools. For children of Singapore Citizens or Singapore Permanent Residents and dependants of Employment Pass and Skilled Work Permit Holders, the monthly school fees payable for the first 2 years are S\$3.50 for primary, S\$6 for secondary, and S\$7 for pre-university levels. For the third year onwards, the school fees payable will be determined based on their citizenship status.

In addition to school fees, all students are to pay miscellaneous fees. The maximum monthly miscellaneous fees payable are S\$11 for primary, S\$16 for secondary and S\$22 for pre-university levels. Students studying in Autonomous Schools are also required to pay additional miscellaneous fees. Please check directly with the schools on the actual amount of miscellaneous fees payable.

Admission of Foreign Students to Public Schools

International students who wish to seek admission for academic year 2008 before the new admissions exercise may approach schools directly. Admission is subject to availability of vacancies in the school.

New Admissions Exercise (International Students) for 2009 onwards

For admission to schools in academic year 2009, MOE will be conducting a centralised admissions exercise for new international students who wish to join our primary and secondary schools.

This exercise will comprise a centralised test tentatively scheduled in September/October 2008. The test is for new international students seeking admission into the levels of Primary 2 to 5 or Secondary 1 to 3. Applicants will be required to sit for English and Mathematics papers that would assess their English literacy, numeracy and reasoning abilities. Successful applicants would be offered a place in a suitable school based on available vacancies and their test performance. Details are available on this website:

<http://www.moe.gov.sg/education/admissions/international-students/>

For further clarifications, you may also contact:

- MOE Customer Service Centre at DID (65) 68722220, Fax (65) 67764617
- MOE email address at contact@moe.edu.sg

International Schools

You will also be spoilt for choice in terms of the choice of international schools that have established a presence in Singapore. Most international schools provide education up till the pre-university stage, equivalent to grade 12 in the US.

List of Foreign System Schools/ International Schools

School	Address	Phone/Fax	Email/Website
American College	Head Office: 21 Preston Road, Singapore 109355 City Campus: 12 Prince Edward Road #01-03 Podium A, Bestway Building, Singapore 079212	T: 62234566 F: 62234533	amercoll@iss.edu.sg
Australian International School	1 Lorong Chuan, Singapore 556818	T: 68835155 F: 62855255	enquiries@ais.com.sg , www.ais.com.sg
Avondale Grammar School	506 Lorong 1, Toa Payoh, Singapore 319760	T: 62588544 F: 62581667	admissions@avondalegs.com.sg , www.avondalegs.com.sg
Cambridge Child Development Centre (Admiral Hill)	345 Old Nelson Road, Admiral Country Club, Singapore 758692	T: 67554647/ 83330049	admiralhill@cambridgecdc.com
Cambridge Child Development Centre (Ang Mo Kio)	5/15 Mei Hwan Drive, Singapore 568346	T: 63834464	cambridgeamk@hotmail.com

School	Address	Phone/Fax	Email/Website
Cambridge Child Development Centre (Bukit Timah)	19 Toh Tuck Drive, Singapore 596883	T: 64639240	shree@mba-angels.com
Cambridge Child Development Centre (Choa Chu Kang)	Blk 533 #02-01 Choa Chu Kang Street 51, Lim Bang Shopping Centre, Singapore 680533	T: 67698789	sunnygry@singnet.com.sg
Cambridge Child Development Centre (Hougang)	38 Poh Huat Crescent Singapore 546871 8 St. Xavier's Lane Singapore 535736	T: 62881838 T: 62880083	mseeds@singnet.com.sg
Cambridge Child Development Centre (Katong)	17 Rambai Road, Singapore 424336	T: 62477350	ikidspreschoolers@yahoo.com.sg
Cambridge Child Development Centre (Novena)	1 Novena Terrace, Singapore 307903	T: 63550555	cambridgenovena@yahoo.com.sg
Cambridge Child Development Centre (Tanglin)	38C Belvedere Close, Singapore 159883	T: 64756556	tanglin@cambridge.com
Cambridge Child Development Centre (Thomson)	51 Lorong Puntong, Singapore 576441	T: 64511951	educa@pacific.net.sg
Cambridge Child Development Centre (Upper Changi)	5 Jalan Pari Kikis, Peakview Estate, Singapore 488531	T: 91146282	upperchangi@cambridge.com
Cambridge Child Development Centre (Yio Chu Kang)	35 Saraca Road, Singapore 807381	T: 64814220	ikidspreschools@yahoo.com.sg
Canadian International School, Tanjong Katong Campus (Early childhood to grade 8)	371 Tanjong Katong Road, Singapore 437128	T: 63451573 F: 63454057	admissionstk@cis.edu.sg, www.cis.edu.sg
Canadian International School (Elementary school)	5 Toh Tuck Road, Singapore 596679	T: 64671732 F: 64671729	admissions.cis.edu.sg, www.cis.edu.sg
Canadian International School (Middle School Campus)	71 Bukit Tinggi Road, Singapore 289759	T: 68751519 F: 6875 1516	middleschool@cis.edu.sg, www.cis.edu.sg
Canadian International School (High School Campus)	514 Kampong Bahru Road, Singapore 099450	T: 63230208 F: 63230209	highschool@cis.edu.sg, www.cis.edu.sg
The Caterpillars Cove	535 Clementi Road, Blk 53 Level 3 Ngee Ann Polytechnic, Singapore 599489	T: 64645219 F: 64630977	www.thecaterpillarscove.com.sg

School	Address	Phone/Fax	Email/Website
Chatsworth International School (Orchard Campus)	37 Emerald Hill Road, Singapore 229313	T: 67375955 F: 67375655	information@chatsworth.com.sg, www.chatsworth.com.sg
Chatsworth International School (East Campus)	25 Jalan Tembusu, Singapore 438234	T: 63445955 F: 63465565	joseph@chatsworth-east.com, www.chatsworth-east.com
Chatsworth Kindergarten	1 Jalan Kayu, Singapore 799433	T: 6481 5585 F: 6481 5565	admin@chatsworthkindergarten.com, www.chatsworthkindergarten.com
Chinese International School	60 Dunearn Road, Singapore 309434	T: 62540200 F: 62525120	admin@cnis.edu.sg, www.cnis.edu.sg
Dover Court Preparatory School	301 Dover Road, Singapore 139644	T: 67757664 F: 67774165	info@dovercourt.edu.sg, www.dovercourt.edu.sg
DPS International School	36 Aroozoo Avenue, Singapore 539842	T: 62856300 F: 62948195	admissions@dps.edu.sg, www.dps.edu.sg
Emaar International School (EIS) [fka E R International School]	201 Ulu Pandan Road, Singapore 596468	T: 65366566 F: 65366866	enquiries@eis.edu.sg, www.eis.edu.sg
EIS International Pre-school (Japanese School)	7 Seraya Lane, Singapore 437275	T: 63484780 F: 63484781	jean@eisintl.com
EtonHouse International Pre-School	2 Orchard Boulevard, Singapore 248643	T: 62523322 F: 62359630	orchard@etonhouse.com.sg, www.etonhouse.com.sg
EtonHouse International School & Pre-School (Broadrick Campus)	51 Broadrick Road, Singapore 439501	T: 63466922 F: 63466522	enquiry@etonhouse.com.sg, www.etonhouse.com.sg
Finnish Supplementary School	Overseas Family School, 25F Paterson Road, Singapore 238515	T: 63222451 F: 62255469	
German European School Singapore	72 Bukit Tinggi Road, Singapore 289760	T: 64691131 F: 64690308	info@gess.sg, admissions@gess.sg, www.gess.sg
Global Indian International School	1 Mei Chin Road, Blk C Queenstown, Singapore 149253	T: 64791511 F: 64791248	admissions@giisingapore.org, www.giisingapore.org
Globalkids Early Learning Centre	4 Crescent Road, Singapore 439289	T: 63463218	karenlim@globalkids.com.sg jessiechoo@globalkids.com.sg
Happy Joy School House	7 Ming Teck Park, Singapore 277375	T: 64669838 F: 64669181	
Hollandse School	65 Bukit Tinggi Road, Singapore 289757	T: 64660662 F: 64677582	adminhsl@hollandeschool.org, www.hollandeschool.org
Hwa Chong International School	663 Bukit Timah Road, Singapore 269783	T: 64647077 F: 64647060	admin@hcis.edu.org
Insworld School	31 Upper Weld Road, Singapore 207388	T: 67321728 F: 67346398	enquiries@insworldsch.com, www.insworldsch.com
International Community School	27A Jubilee Road, Singapore 128575	T: 67767435 F: 67767436	info@ics.edu.sg, www.ics.edu.sg

School	Address	Phone/Fax	Email/Website
ISS International School (Elementary School)	25 Paterson Road, Singapore 238510	T: 62355844 F: 67325701	admissions@iss.edu.sg, es@iss.edu.sg, www.iss.edu.sg
ISS International School (Middle School)	25 Paterson Road, Singapore 238510	T: 67376407 F: 67354966	admissions@iss.edu.sg, ms@iss.edu.sg, www.iss.edu.sg
ISS International School (High School)	21 Preston Road, Singapore 109355	T: 64754188 F: 62737065	admissions@iss.edu.sg, hs@iss.edu.sg, www.iss.edu.sg
Italian Supplementary School	Embassy of Italy, 101 Thomson Road #27-02/03, United Square, Singapore 307591	T: 64664849 F: 62533301	
Japanese Kindergarten	251 West Coast Road, Singapore 127390	T: 67793434 F: 67771830	
The Japanese Primary School (Clementi Campus/HQ)	95 Clementi Road, Singapore 129782	T: 67753366 F: 67780801	office@sjscle.edu.sg, www.sjs.edu.sg
The Japanese Primary School (Changi Campus)	11 Upper Changi Road North, Singapore 507657	T: 65429600 F: 65428801	office@sjscle.edu.sg, www.sjs.edu.sg
The Japanese Secondary School (West Coast Campus)	201 West Coast Road, Singapore 127383	T: 67797355 F: 67780801	office@sjscle.edu.sg, www.sjs.edu.sg
Konohana Gakuin Kindergarten	16 Ramsgate Road, Singapore 437462	T: 63420100 F: 63420200	kgi@konohanagakuin.ac.jp, http://kgi.konohanagakuin.ac.jp
Korean Church Kindergarten	16 Barker Road, Singapore 309891	T: 62547943 F: 62506662	koreanch@singnet.com.sg
Lock Road Kindergarten	10 Lock Road, Singapore 108938	T: 64746181 F: 64741689	lockroad@singnet.com.sg, www.lockroadkindergarten.com
Lycee Francais De Singapour	3000 Ang Mo Kio Ave 3, Singapore 569928	T: 64881160 F: 64872821	administration@lfs.edu.sg, www.lyceefrancais.edu.sg
Modern Montessori International Group	400 Orchard Road #24-10 Orchard Towers, Singapore 238875	T: 62354600 F: 62353086	www.modern-montessori.com
Norwegian Supplementary School	c/o Overseas Family School, 25F Paterson Road, Singapore 238515	T: 67385661 F: 67385662	
NPS International School	10 Chai Chee Lane, Singapore 469021	T: 62942400 F: 64482089	register@npsinternational.com.sg, http://npsinternational.com.sg
Overseas Family School	25F Paterson Road, Singapore 238515	T: 67380211 F: 67338825	soma_mathews@ofs.edu.sg, www.ofs.edu.sg
Pat's Schoolhouse Arena	Arena Country Club, 511 Upper Jurong Road, Singapore 638366	T: 62626990 F: 62620083	arena@patschoolhouse.com, www.patschoolhouse.com
Pat's Schoolhouse Pte Ltd (Baby Haven)	3 Halifax Road, Singapore 229257	T: 62962663 F: 62956706	infantcare@patschoolhouse.com, www.patschoolhouse.com
Pat's Schoolhouse Buckley	7 Buckley Road, Singapore 309763	T: 62567404 F: 62561498	buckley@patschoolhouse.com, www.patschoolhouse.com

School	Address	Phone/Fax	Email/Website
Pat's Schoolhouse Claymore	11 Claymore Road, Singapore 229541	T: 62386753 F: 67364993	claymore@patschoolhouse.com, www.patschoolhouse.com
Pat's Schoolhouse Halifax	9 Halifax Road, Singapore 229261	T: 62993156 F: 62990372	halifax@patschoolhouse.com, www.patschoolhouse.com
Pat's Schoolhouse Jubilee Park	31 Jubilee Road, Singapore 128583	T: 67733373 F: 67762941	jubileepark@pathouse.com, www.patschoolhouse.com
Pat's Schoolhouse Katong	45 Meyer Road, Singapore 437870	T: 63467675 F: 63467875	katong@patschoolhouse.com, www.patschoolhouse.com
Pat's Schoolhouse Mount Emily	19 Upper Wilkie Road, Singapore 228126	T: 63382768 F: 63389662	mountemily@patschoolhouse, www.patschoolhouse.com
Pat's Schoolhouse Ridgewood	61A Mount Sinai Drive, Singapore 277114	T: 64648951 F: 64697814	ridgewood@patschoolhouse.com, www.patschoolhouse.com
Pat's Schoolhouse Serangoon	2C Lim Ah Pin Road, Singapore 547813	T: 62857205 F: 62827870	serangoon@patschoolhouse.com, www.patschoolhouse.com
Pat's Schoolhouse Siglap	26A Jalan Ulu Siglap, Singapore 457184	T: 62429975 F: 62429348	siglap@patschoolhouse.com, www.patschoolhouse.com
Pibo's Garden Playschool	1 Dunearn Close, Singapore 299574 7 Hua Guan Crescent, Singapore 589034	T: 64662639 T: 64650019	info@pibosgarden.com
Praise International School (fka Praise –Kids Pre-School)	Blk 2 Turf Club Road, Singapore 287988	T: 64630689 F: 64630698	praisekids@singnet.com.sg
Preschool for Multiple Intelligence (PMI)	37 Newton Road, Singapore 307965	T: 62599661	enquiry@pmi.com.sg
Rosemount International School	461 Telok Blangah Road, Singapore 109022	T: 62762821 F: 62761063	ris@rosemount.com
Rosemount Kindergarten	25 Ettrick Terrace, Singapore 458588	T: 64464636 F: 64444075	rosemount@pacific.net.sg
Sekolah Indonesia Singapura	20A Siglap Road, Singapore 455859	T: 64480722 F: 64444831	
Singapore American School	40 Woodlands Street 41, Singapore 738547	T: 63633403 F: 63633408	sasinfo@sas.edu.sg, www.sas.edu.sg
Singapore Korean School	74 Lim Ah Woo Road, Singapore 438134	T: 67410778 F: 67411321	sinkosl@singnet.com.sg
St Joseph International School	490 Thomson Road, Singapore 298191	T: 63539838 F: 63543103	info@sji-international.com.sg, www.sji-international.com.sg
Sunflower Childcare & Development Centre Pte Ltd (HQ)	670 Bedok North Street 31 #02-03/04, Kaki Bukit CC, Singapore 469627	T: 64478782 F: 64478797	info@sunflowerkid.com
Sunflower KinderHub (North)	33 Kasai Road, (off Seletar Road), Singapore 808280	T: 64846781	skhub@singnet.com.sg
Sunflower Montessori Childcare (West)	2 Lorong Kismis, Singapore 597999	T: 64687790	sftohyi@singnet.com.sg

School	Address	Phone/Fax	Email/Website
Sunflower BabyHouse (Central)	36 Watten Rise, (off Dunearn Road), Singapore 287336	T: 64631303	sunflowerbabyhouse@yahoo.com.sg
Swedish Supplementary Education School	c/o Swedish Embassy, 111 Somerset Road #05-01 Singapore Power Building, Singapore 238164	T: 67327740	
Swiss School Singapore	38 Swiss Club Road, Singapore 288140	T: 64682117 F: 64665342	info@swiss-school.edu.sg, www.swiss-school.edu.sg
Tanglin Trust School	95 Portsdown Road, Singapore 139299	T: 67780771 F: 67775862	admissions@tts.edu.sg, www.tts.edu.sg
United World College of South East Asia Dover Campus	1207 Dover Road, Singapore 139654	T: 64199322 F: 67730203	admissions@uwcsea.edu.sg, www.uwcsea.edu.sg
United World College of South East Asia East Campus	10 Ang Mo Kio Street 54, Singapore 569184	T: 67742653 F: 67741219	admissionseast@uwcsea.edu.sg, www.uwcsea.edu.sg
Waseda Shibuya Senior High School	57 West Coast Road, Singapore 127366	T: 67732950 F: 67732951	
White Lodge Early Learning Centre Pte Ltd (HQ)	506 Lor 1 Toa Payoh Rise, Singapore 319760	T: 62554230 F: 62552984	wlelchq@singnet.com.sg
White Lodge Early Learning Centre Pte Ltd (Bukit Timah)	39 Linden Drive, Singapore 288712 1 Jalan Siap, Singapore 678541	T: 64688846 F: 67620215 T: 63145481 F: 63145482	wlelc@singnet.com.sg cwelc@singnet.com.sg
White Lodge Early Learning Centre Pte Ltd (West Coast)	9 South Buona Vista, Singapore 118141	T: 67798465	wlelc2@singnet.com.sg
White Lodge Early Learning Centre Pte Ltd (East Coast)	105 Lorong Stangee, Singapore 425080	T: 64406690	wlelc4@singnet.com.sg
White Lodge Early Learning Centre Pte Ltd (Dempsey)	75E Loewen Road, (Dempsey Road), Singapore 248845	T: 64757262	wlelc5@singnet.com.sg
Willow Nursery	26A Toh Tuck Road, Singapore 596697	T: 64622956 F: 64633224	info@willownursery.edu.sg, www.willownursery.edu.sg

BANKING IN SINGAPORE

Chapter
5

We have established ourselves as a thriving financial centre of international repute, serving not only our domestic economy, but also the wider Asia Pacific region as well as the world. With the high levels of transparency, a robust and efficient legal and judicial framework and a well-regulated international financial sector, Singapore is the only Asian country with a "AAA" rating. Our unique location and sophisticated telecommunications network also allow financial institutions here to transact business with any part of the world within the same working day.

Our financial centre offers a broad range of financial services including banking, insurance, investment banking and treasury services. Commercial banks in Singapore undertake universal banking which includes deposit taking, the provision of cheque services and lending. Commercial banks may also carry on any other business which is regulated or authorised by Monetary Authority of Singapore (MAS), including financial advisory services, insurance broking and capital market services. Commercial banks operate as full banks, wholesale banks or offshore banks.

Full Banks

Full banks may provide the whole range of banking business approved under the Banking Act. There are currently 30 full banks in Singapore. Six of them are locally-incorporated entities under the three local banking groups, and one is a locally incorporated subsidiary of a foreign bank. The remaining 23 banks are branches of foreign-incorporated banks. Six of the foreign banks operating in Singapore have been awarded Qualifying Full Bank (QFB) privileges.

Local full banks

- DBS Bank Ltd <http://www.dbs.com.sg>
- United Overseas Bank Ltd <http://www.uob.com.sg>
- Oversea-Chinese Banking Corp <http://www.ocbc.com.sg>
- The Islamic Bank of Asia Ltd <http://www.islamicbankasia.com>
- Bank of Singapore Ltd <http://www.finatiq.com>
- Far Eastern Bank Ltd <http://www.uobgroup.com>

Foreign full banks

There are six foreign full banks that have up to 10 branches in Singapore. You may visit the following

- ABN AMRO <http://www.abnamro.com.sg>
- BNP Paribas <http://www.bnpparibas.com.sg>
- Citibank <http://www.citibank.com.sg>
- HSBC <http://www.hsbc.com.sg>
- Maybank <http://www.maybank2u.com.sg>
- Standard Chartered <http://www.standardchartered.com.sg>

websites of the respective foreign banks for further information:

For a complete list of foreign full banks, you may visit this website:

http://www.mas.gov.sg/fi_directory/index.html

Foreign Wholesale banks

Wholesale banks may engage in the same range of banking business as full banks, except that they do not carry out Singapore Dollar retail banking activities. All wholesale banks in Singapore operate as branches of foreign banks. For a complete list of foreign wholesale banks, you may visit this website: http://www.mas.gov.sg/fi_directory/index.html

Financial transactions

Opening an account

You will need to present your passport and employment when opening a bank account at the banks. The 2 most basic bank accounts are:

	Savings account	Current/chequeing account
Interest rates	Low	Generally does not yield any interest, but some banks offer a hybrid account that offers both chequeing services as well as give an interest
Minimum initial deposit	S\$500 – S\$1000 (varies for different banks)	S\$1000 – S\$3000 (varies for different banks)
Fees	~S\$2 per month if the account balance falls below a certain amount (usually around S\$500 to S\$1000)	Varies for different banks

E-banking

Most banks in Singapore offer e-banking to their customers with two layers of security: your e-banking user ID and PIN, as well as an additional Second Factor Authentication (2FA) number. The 2FA is a randomly generated PIN that the bank sends via an electronic device to your handphone or a token device. With the implementation of 2FA, should your User ID and PIN be compromised for any reason, the "thief" will also need to have the second PIN, without which he will be unable to access your iBanking. This makes it more difficult for hackers who manage to obtain a string of customers' User IDs and PINs via phishing or spyware.

Automated Teller Machines (ATMs)

Banks generally issue ATM cards with each account. The cards can be used at ATMs that are conveniently located at most public places with high human traffic. The ATMs is a convenient alternative to visiting the bank branches for withdrawals of cash, checking of account balance, transferring of funds, paying of bills etc.

Network for Electronic Transfers (NETS)



The Network for Electronic Transfers (NETS) offers an excellent alternative to credit/debit cards. It allows you to use an ATM card and a PIN number to make over-the-counter payments that deduct funds directly from your bank accounts. NETS transactions are accepted where the service provider displays the NETS logo.

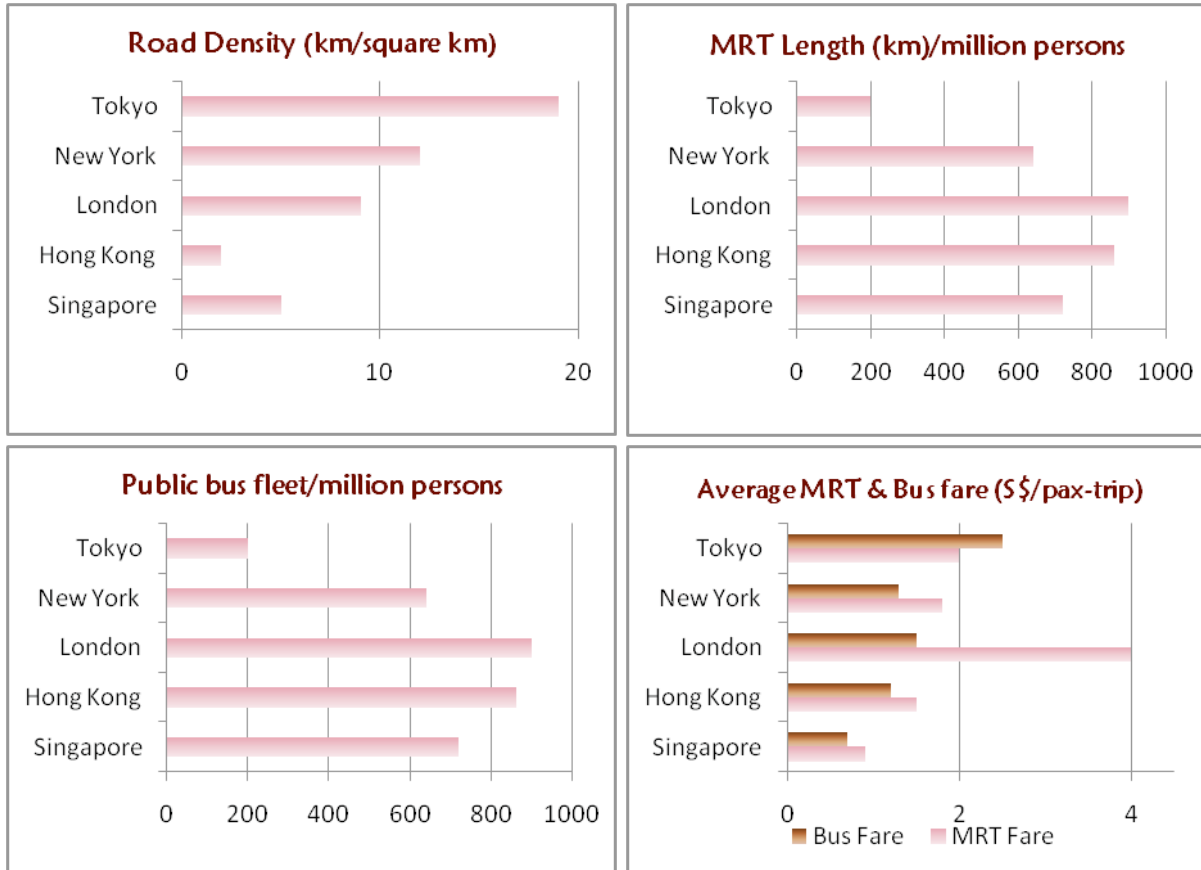
GIRO

GIRO is another service offered by the banks and major billing organisations to help you schedule payments of your bills automatically. This service allows you to specify the regularity and/or amounts that you would like to make payment for utility, taxes, installment plans etc. Application forms to arrange for GIRO transactions can be obtained from all participating billing organizations.

GETTING AROUND

Chapter
6

As a result of our coordinated effort to develop an extensive, efficient and affordable public transportation system, the International Association of Public Transport (UITP) ranked Singapore as among the best in the world in overall operation. We now have an efficient network of taxis, buses and the modern Mass Rapid Transit (MRT) rail system that is highly integrated, and is hassle-free and affordable. In fact, the standards of our public transportation is comparable (if not better than) to standards in other major cities!



Source: Singapore Land Transport: Statistics in Brief 2007, www.lta.gov.sg

Modes of transportation



Taxis

There are over 15,000 air-conditioned cabs island wide provided by 6 taxi companies, namely Comfort Transport, Citycab, Trans-Cab, Smart Automobile, Premier Taxis and SMRT Taxis. These taxis provide comfortable, hassle-free travel at a very reasonable cost. They can be flagged down 24 hours a day on most roads, with well-marked taxi-stands available outside most major shopping centres and hotels.

All taxis in Singapore charge by the meter. The flag-down (inclusive of 1st km or less) starts from \$2.80 - \$3.20 and the subsequent charge is \$0.20 for every 330-385 metres thereafter or less up/after 10 km. There are also other surcharges hiring taxis during peak hours, mid-night, eve of public holidays, and trips starting from city area etc.



Buses

Public bus transport is provided by 2 operators, namely SBS Transit and SMRT. Both operators serve their own network of routes and bus interchanges throughout Singapore. The buses operate from 0530 hrs to 0000 hrs. The bus fares range from S\$0.80 to S\$1.50 for non air-conditioned buses and S\$0.90 to S\$1.80 for air-conditioned buses if you paying with cash. We also have a system of ez-link card that allows for cashless transactions on buses as well as on the Mass Rapid Transit (MRT) and Light Rapid Transit (LRT). Bus fares for payment with ez-link cards ranges from S\$0.62 – S\$1.33 for non-air-conditioned buses, and S\$0.67 – S\$1.58 for air-conditioned buses. Details of bus routes and fares are displayed at bus stations. SBS Transit also has a wireless service that offers bus arrival time estimation on a real time basis through GPRS or SMS on mobile devices.

Mass Rapid Transit (MRT) and Light Rapid Transit (LRT)

Transport operator SMRT has clinched the "Best Passenger Experience" award at the inaugural Metro Awards 2008 in Copenhagen, Denmark⁵



The MRT is an air-conditioned passenger train service with stations island-wide with three main lines – the North-South line from Marina Bay to Jurong East, the East-West line from Changi Airport/Pasir Ris to Boon Lay, and the North-East line from Harbour Front to Punggol. The fares range from S\$ 0.90 to a maximum of S\$1.70 depending on the distance travelled. The trains arrive at the station at interval of between 2.5 minutes and 8 minutes from 0530 hrs until 0030 hrs.

You can also check for precise arrival/departure timings at respective MRT stations. The LRT system was added to the MRT network to commute within a particular estate (namely Sengkang, Punggol, Bukit Panjang). For more details of the MRT and LRT network, please refer to this website: <http://www.smrt.com.sg>.



Private Cars

Driving is on the left side of the road in Singapore. If you are not used to a right-hand drive vehicle, you should be extra careful. You will need a driving license to drive in Singapore. If you have an international driving license, you are required to apply for a Singapore driver's driving license and pass the basic driving theory.

In an effort to control traffic congestion on the island, Singapore has implemented a Vehicle Quota System, where the government determines the number of new vehicles allowed for registration through the release of Certificates of Entitlements (COEs). Interested vehicle purchasers are then required to bid for these COEs, before they are able to complete the purchase. For more details of car ownership, please refer to these website: <http://www.lta.gov.sg> or <http://www.onemotoring.com.sg>.

⁵ Metro Awards is part of MetroRail, an annual conference of the urban rail industry worldwide which met from 1 to 3 April this year. Source: Channel News Asia

STAYING CONNECTED

Chapter
7

The World Economic Forum ranked Singapore 1st in Asia and 5th globally in their Global Information Technology Report 2007-2008 report. This is testament to the efforts that Singapore has put in to develop an advanced and reliable Information Communication Technology (ICT) infrastructure that has met the needs and demands of our vibrant economy and society. The latest study on broadband usage in Singapore reveals a household broadband penetration of 79.2%, while Internet penetration amongst households is at 71% of the population.

Rank	Country	Network Readiness Index
1	Denmark	5.78
2	Sweden	5.72
3	Switzerland	5.53
4	United States	5.49
5	Singapore	5.49

Source: Global Information Technology Report 2007-2008, World Economic Forum

Telecommunications Services

There are 3 major service providers of telecommunication services in Singapore:

- SingTel <http://www.singtel.com>
- MobileOne <http://www.m1.com.sg>
- Starhub <http://www.starhub.com>

Each of these operators offers a wide range of communication services at competitive rates, including:

- Mobile communications services, including cellular and paging services. Mobile phone operators in Singapore operate networks such as GSM900, GSM1800, W-CDMA
- International telephone services, including IDD services, calling cards, facsimile services
- Prepaid mobile communication services ("pay as you use")
- Public phones
- Internet access services

For more details of the service plans, please refer to the websites of the respective service providers.

Fixed line subscription

The fixed line household penetration rate in Singapore is at 95% - most apartments should already come with a fixed phone line. SingTel provides most of the analog fixed line connections in Singapore, and residential subscription of S\$107 per annum (with a one-time activation charge of S\$53.50). Usage rates start from S\$0.75 for 60-seconds block during non-peak hours to 30-seconds block during peak hours.

Starhub has introduced digital voice subscriptions with a monthly subscription of S\$10.49 that offers unlimited local incoming and outgoing calls all day.

Mobile phones

Mobile phones are the most common means of communication in Singapore, where the mobile penetration rate is more than 130%. All the 3 telecommunication service providers offer monthly price plans with different promotional rates and bundled services. The plans could range from S\$19.95 – S\$200 per month (excluding installation, hardware and other optional services).

⁶ Statistics on Telecom Services for February 2008, <http://www.ida.gov.sg>

⁷ IDA's Annual Survey on Infocomm Usage in Households and by Individuals 2006, <http://www.ida.gov.sg>

Alternatively, you may choose to purchase pre-paid cards from the service providers. These are stored-value cards which you may use till the value is depleted. These cards are available at all telecommunication shops. You may top-up the value of these cards at ATMs, Self-service Automated Machines (S.A.M), or purchase top-up cards at convenience shops such as 7-Eleven and Cheers, which are opened 24 hours daily. Most pre-paid cards are also bundled with free IDD calls to specific countries, plus auto-roaming services.

Public payphones

Public payphones are located at most shopping malls and public places, and operate by credit card or stored-value phonecards. Local calls from public payphones cost 10 cents per three-minute block. Besides local calls, all cardphones provide International Direct Calling services and subscriber Trunk Dialling for Malaysian calls. Stored-value phonecards are found in denominations of S\$2, S\$5 S\$10, S\$20 and S\$50 and can be purchased from post offices and phonecard agents. International Calling Cards are also available at all post offices, 7-Eleven stores and other retail outlets.

International calling services

The 3 service providers in Singapore offer a wide range of international calling services for consumers to choose from depending on your needs and budget:

- SingTel : IDD 001; BudgetCall 013; STD 020; V019
- MobileOne : Premier IDD 002; IDD 021
- StarHub : IDD 008; IDD018

Alternatively, stored-value card phones or international calling cards can be purchased from post offices and phonecard agents to make international calls through all phones. The international calling cards are also available at all 7-Eleven stores and other retail outlets. For more details of the service and rates to different destinations, please refer to the websites of the respective service providers.

Wireless Networks

Singapore's household broadband penetration is approximately 75% (99% of the island is broadband enabled). As part of long-term plans to turn Singapore into an "intelligent island", Singapore has launched an extensive wireless@SG programme island-wide where users can enjoy free indoor and outdoor seamless wireless broadband access at many public places. These areas include high traffic areas in the Central Business District, shopping areas in the Orchard Road and HDB Town Centres. Some cafes and fast food outlets also provide consumer free wireless broadband access too. Users simply need to register an account with one of the 3 providers (iCell, QMax, SingTel). For details, please refer to this website: www.ida.gov.sg.

For home use, you can sign up for with the following operators which offer wide range of plans at a reasonable and affordable fee. Broadband plans from these companies range from \$19.95 - \$208 per month:

- SingNet BroadBand <http://www.singnet.com.sg>
- StarHub MaxOnline <http://maxonline.starhub.com>
- MobileOne <http://M1.com.sg>
- PacNet <http://www.pacific.net.sg>
- QMax Communications <http://www.gmax.com.sg>

Acknowledgements

This guide book has been compiled with information from web pages, and from websites and collaterals of the following agencies/companies:

Agency for Science, Technology and Research

Agri-Food & Veterinary Authority of Singapore

Central Provident Fund

Contact Singapore

Housing Development Board

<http://www.expatsingapore.com>

<http://www.home-in-singapore.sg>

<http://www.singaporeexpats.com>

Infocomm Development Authority

Inland Revenue Authority of Singapore

Land Transport Authority

Ministry of Education

Ministry of Health

Ministry of Manpower

Ministry of Transport

MobileOne Ltd

Monetary Authority of Singapore

National Healthcare Group

SBS Transit Ltd

Singapore Customs

Singapore Health Services

Singapore Medical Council

Singapore Press Holdings Pte Ltd

SingTel

SMRT Corporation Ltd

StarHub

Urban Redevelopment Authority

MOHHoldings
MOH Holdings Pte Ltd